



the expoline frame

HIGH PERFORMANCE
DISPLAY SYSTEMS

Design Expo Systems | KMO Park Ikaros | Sint-Martinusweg 189/15 | www.designexposystems.be | Tel 02 569 04 20

 design|expo|systems

Passion behind every detail

Since 1986, we have designed and crafted high performance display systems with passion behind every detail. Every part is designed in Sweden by our dedicated engineers focusing on simplicity, high tolerance, durability and appearance.

We are committed to deliver superior products made by materials such as specified aluminium with high surface finish, cold formed steel and high quality thermoplastics.

LET US INTRODUCE...

The Expolinc and Light Frame system. It requires no tools or specialized labor to setup. The unique magnetic connectors guide you to a smooth, stable and safe installation and the optimized packaging minimizes shipping, drayage and storage costs.

The systems design consists of smooth, rounded edges along with profiles with high surface finish for a stylish environment.

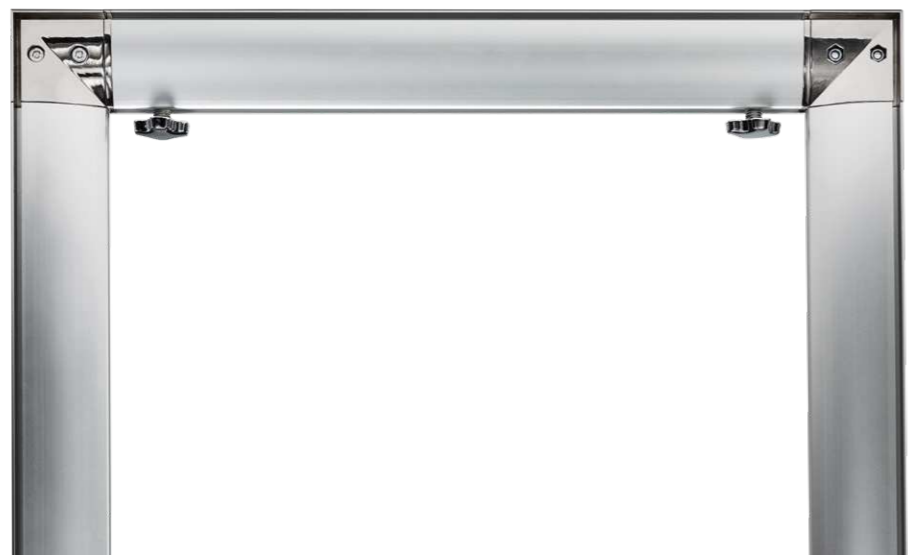
Explore the flexible and revolutionary world of The Expolinc and Light Frame system - Whether you need a simple backwall or an advanced environment.

The Expolinc frame, light frame and counter



Portable and
toolless

SPECIFIED ALUMINIUM
WITH HIGH SURFACE FINISH



Magnetic clutch.
Assembling made simple.

STRAIGHT
AND SIMPLE



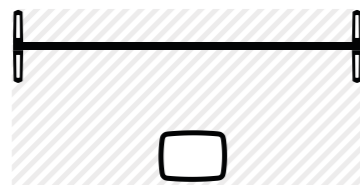
CONNECT FOR
MORE

the expoline frame



THE EXPOLINC FRAME

LAYOUT

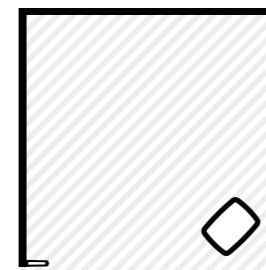


1 pc Expolinc Frame 2,95 m (height 2,5 m), 1 pair double sided stabilizing feet, 1 pc Standard Case XL



3 000 X 1 500 mm
4,5 m²

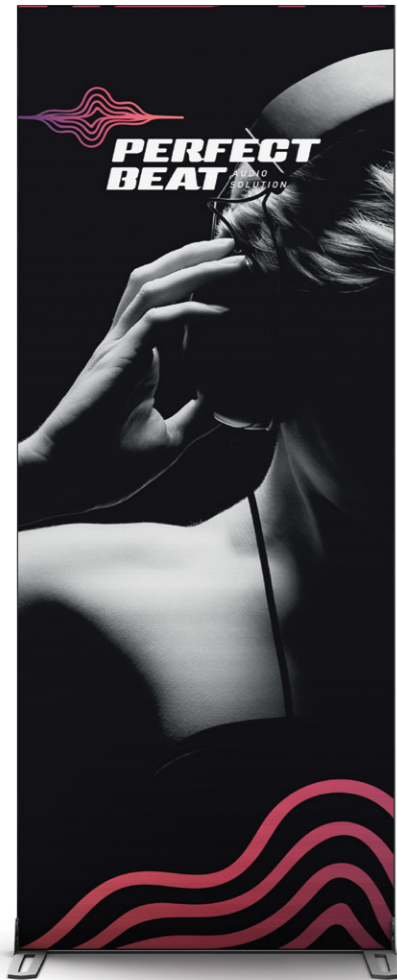
LAYOUT



2 pcs Expolinc Frame 2,95 m (height 2,5 m), 1 pair single sided stabilizing feet,



3 000 X 3 000 mm
9 m²



1
METER



2
METER



4
METER



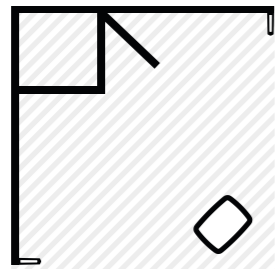
Frames to combine or stand alone

Up to 5 meter, seamless

COUPLED WITH
STORAGE



LAYOUT



1 pc Storage room 0,95 x 1 m (height 2,5 m), 2 pcs Expolinc Frame 1,95 m (height 2,5 m), 1 pair single sided stabilizing feet, 1 pc Standard Case XL



3 000 X 3 000 mm
9 m²

THE EXPOLINC FRAME

the expolinc light frame

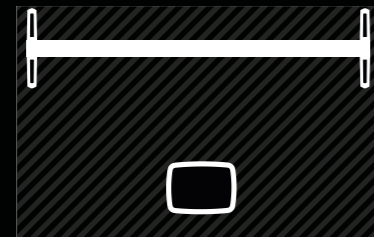
SIMPLE BUT
EYE-CATCHING



WHEN NEED TO
BE SEEN



LAYOUT



1 pc Expolinc Light Frame 2,8 m (height 2,5 m), 1 pair double sided stabilizing feet, 1 pc Standard Case XL



2 000 X 3 000 mm
6 m²

LAYOUT



2 pcs Storage room 0,95 x 1 m (height 2,5 m), 4 pcs Expolinc Frame 1,95 m (height 2,5 m), 2 pcs Expolinc Frame 0,5 m (height 2,5 m), 1 pc Expolinc Light Frame 2,8 m (height 2,5 m), 1 pc Expolinc Frame Counter 2 m, 1 pair single sided stabilizing feet



9 000 X 3 000 mm
27 m²

THE EXPOLINC LIGHT FRAME

The image features several aluminum extrusion profiles and connectors. On the left, two profiles are shown with various end fittings. In the center, a profile is connected to another using a T-joint. On the right, a vertical profile is connected to a horizontal profile using a corner bracket. The background is black, and the lighting highlights the metallic texture of the aluminum.

the choice is yours
BUILD WHATEVER

We create marketing
tools for professionals

HIGH PERFORMANCE
DISPLAY SYSTEMS